



# Newsletter

## 9<sup>th</sup> November 2018

Peterchurch Primary School

Website: [www.peterchurch.hereford.sch.uk](http://www.peterchurch.hereford.sch.uk)

Email: [admin@peterchurch.hereford.sch.uk](mailto:admin@peterchurch.hereford.sch.uk)

Telephone: 01981 550230

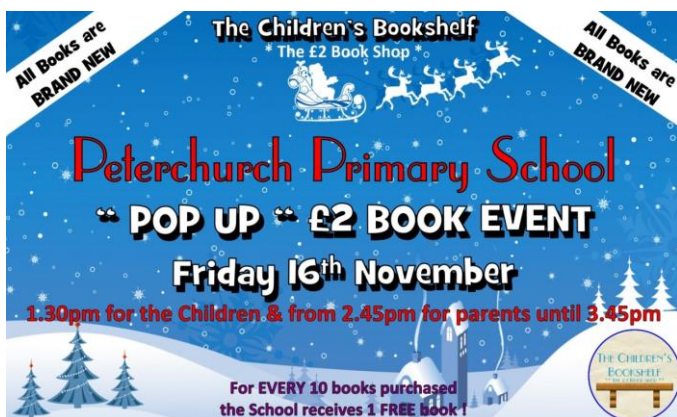
### Individual School Photos

Next Thursday 15<sup>th</sup> November the photographer will be in school taking individual and sibling school photos for you to purchase. This is a change, as previously these photos have taken place in the summer term. At this time of year the photos would make great Christmas presents.

Send your child to school looking smart in their school uniform next Thursday for their photo. There won't be any Forest School for Reception on this day. If you would like your child to have photos with pre-school siblings then you can come in to school at 8.30am for these.

### Children's Bookshelf - £2 "Pop Up" Book Event

Don't forget the "Pop Up" Book Stall will be in school next Friday. The children will be bringing home a yellow envelope next week in which they can bring some money to school to spend at the book stall. Each class will have the opportunity to visit the book stall in the afternoon. Parents can come in from 2.45pm to purchase books. From 2.45pm the PTA will be selling refreshments for parents and will also have a sweet stall. This is a great opportunity to do some early Christmas shopping!



### REMEMBRANCE SUNDAY Peterchurch 2018

A joint Service organised by the Peterchurch and District Branch of the Royal British Legion, the Peterchurch Parish Council, and with the co-operation of the Golden Valley Day Centre, will be held on Remembrance Sunday, November 11<sup>th</sup>, 2018. The Service will commence at 10.15 am, with a Parade at the War Memorial, and will move on, in order to be at the Church by 10.30 am. Parishioners and onlookers will be welcome to congregate around the War Memorial for its Re-dedication. At 11 am, a Ceremony by the Royal British Legion to acknowledge Armistice Day will be held, and some young children of the village will come forward with a poppy and a laminated tribute to each individual named on the War Memorial from both World War One, and World War Two. These will be placed appropriately around the War Memorial.

Refreshments for everyone will be available at the Village Hall after the Ceremony. In addition, there will be an Information Folder in the Village Hall, relating the story of each fallen Serviceman whose name appears on the Peterchurch War Memorial. These folders are the result of months of hard work by Judith Gaze and Sarah Murrin. The folders are for people to look at, but not to be taken away. Each folder is a poignant tribute to each soldier, and contains, where possible, a Certificate from the Commonwealth War Graves Commission, as well as photographs, family trees, census reports, medical and Regimental histories, and in some cases embarkation details. There will also be a blank piece of paper in each folder, so that anyone who knows anything more about these men can add comments at their leisure.



Peterchurch Primary School is one of five finalists in the Starlight Starbright Competition with Sunshine Radio and Outstanding Education Solutions. You can now visit the Sunshine Radio Website and cast your vote! Voting closes on Sunday 11<sup>th</sup> November.

If our school receives the most votes, then we will win £250 and the choir will sing two songs on Sunday 18<sup>th</sup> November for the Christmas Lights Switch on in High Town, Hereford.



Children in Need Day  
Next Friday 16<sup>th</sup> November  
Wear what you like day –  
wear something spotty  
Bring a £1 donation for Children in Need



**REMINDER**

YEARS 5 & 6 RESIDENTIAL TRIPS, BOOKINGS AND DEPOSITS ARE NOW OVERDUE, WE ARE NOW TAKING FURTHER PAYMENTS TOWARDS THE TRIPS. PLEASE CONTACT THE SCHOOL OFFICE IF YOU HAVE ANY PROBLEMS ON YOUR ACCOUNT.

**After School Clubs Autumn Term 2<sup>nd</sup> Half 2018**

**MONDAYS 3.15-4.15 pm**

Choir Club (KS1 & 2) UNLIMITED 5 Nov - 10 Dec 6 sessions

Construction & Small World Club (KS1, spaces) 5 Nov - 3 Dec (none 10 Dec)

\*\*\*\*\*

**THURSDAYS 3.15-4.15 pm (until 4.45 pm for Cookery)**

**\*\*Cookery Club (Years 5 & 6) FULL - 8<sup>th</sup>, 22<sup>nd</sup> November and 6<sup>th</sup> and 13<sup>th</sup> December, NONE 15<sup>th</sup> or 29<sup>th</sup> November**

Christmas Craft Club (KS1, 1 space) 8 Nov - 13 Dec 6 weeks

PLEASE NOTE THAT THERE ARE SPACES AVAILABLE FOR THE CONSTRUCTION, XMAS CRAFT AND CHOIR CLUBS BUT YOU WILL NEED TO CONTACT THE SCHOOL OFFICE TO BOOK AND THEN MAKE PAYMENT ON PARENT PAY

**Forest School Sessions – Reception Class After Half Term**

**Thursday 15<sup>th</sup> November – NO FOREST SCHOOL (School photo day)**

Thursday 22<sup>nd</sup> November – Session 3

Thursday 29<sup>th</sup> November – Session 4

Thursday 6<sup>th</sup> December – Session 5

Thursday 13<sup>th</sup> December – Session 6

We are requesting, on the days the children have their Forest School sessions, that they come to school in old warm clothes and not school uniform as they will spend most of the afternoon outside. They will also need to bring a pair of wellies to school in a named bag. We will provide sets of waterproofs that the children can wear or they can bring their own if they would prefer.

**School Lunches**

Booking available on ParentPay, lunches need to be booked by Tuesday at midnight for the following week. If you are using your mobile app when booking or making payment please be aware there may be restrictions in place.

**PLEASE ALWAYS CHECK YOUR ORDERS AT THE BEGINNING OF EACH WEEK SO THAT QUERIES CAN BE RECTIFIED QUICKLY.**

**Please note that this terms menu will continue until the Spring Half Term but be mindful that you may not be able to book that far in advance on Parent Pay.**

**Team Bees**

There are two sessions each day from 3.15-4.15pm and from 4.15-5.30pm. Each session costs £3.50 and booking is on ParentPay. The cut-off for booking is midnight the Sunday before.

The schedule for **this** term is as follows:-

Monday – Handball/Netball

Tuesday – Fit Kids Fitness

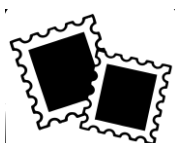
Wednesday – Tag Rugby

Thursday – Dodgeball

Friday – Football (Premiership)

Government Target is 95% +	Percentage attendance
	W/C: Monday 5 <sup>th</sup> November 2018
<b>Whole School To Date:</b>	<b>EVERY SCHOOL DAY COUNTS</b>
<b>95.6%</b>	
ASH	89.5%
<b>BEECH</b>	<b>97.1% 😊 Sonic the Monkey</b>
CHERRY	93.8%
MAPLE	96.9%
OAK	87.5%

Do you have any used stamps? Please bring them into the School Office as we are going to be collecting them for local charities.



**For other events coming up, please see further email or posters on the school noticeboard in the playground.**



**\*\* NO AFTER SCHOOL COOKERY CLUB  
THURSDAY 15<sup>TH</sup> NOVEMBER!! \*\***



**\*\* DATES FOR YOUR DIARY \*\***

Thursday 15 <sup>th</sup> November 2018		Individual Photos with school photographer
Friday 16 <sup>th</sup> November 2018		Pop-Up £2.00 Book Stall
Friday 16 <sup>th</sup> November 2018		Children in Need – Wear something spotty
Tuesday 27 <sup>th</sup> November 2018		Stay & Learn for parents – Cherry, Maple & Oak classes
Thursday 22 <sup>nd</sup> November 2018		Rag Bag Collection
Monday 3 <sup>rd</sup> December 2018	09.00 – 12.00 pm	Nasal Flu Jabs Years R-5
Wednesday 12 <sup>th</sup> December 2018		Christmas Fair
Tuesday 18 <sup>th</sup> December 2018	14.00 – 15.00 pm	Christmas Nativity Performance
Wednesday 19 <sup>th</sup> December 2018	18.00 – 19.00 pm	Christmas Nativity Performance
Wednesday 19 <sup>th</sup> December 2018		AiP Festive Lunch
Friday 21 <sup>st</sup> December 2018		PTA Festive Lunch & Last Day